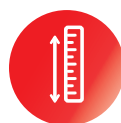


# TRUCK-MOUNTED CONCRETE PUMP SYG5341THB 490C-10



## Highly Reliable

- SANY has World-class lighthouse factories with top-level manufacturing capability, assuring reliable quality.
- Careful matching of components ensures stable performance of the whole machine.



## Strong Pumping

- Single-button high/low pressure switch
- Multiple upgrades assure high suction rate
- Significant advantage in pumping efficiency



## Extremely Economical

- The industry-leading longest service life of wear parts
- Advanced fuel combustion technology
- Targeted upgrades for different working conditions

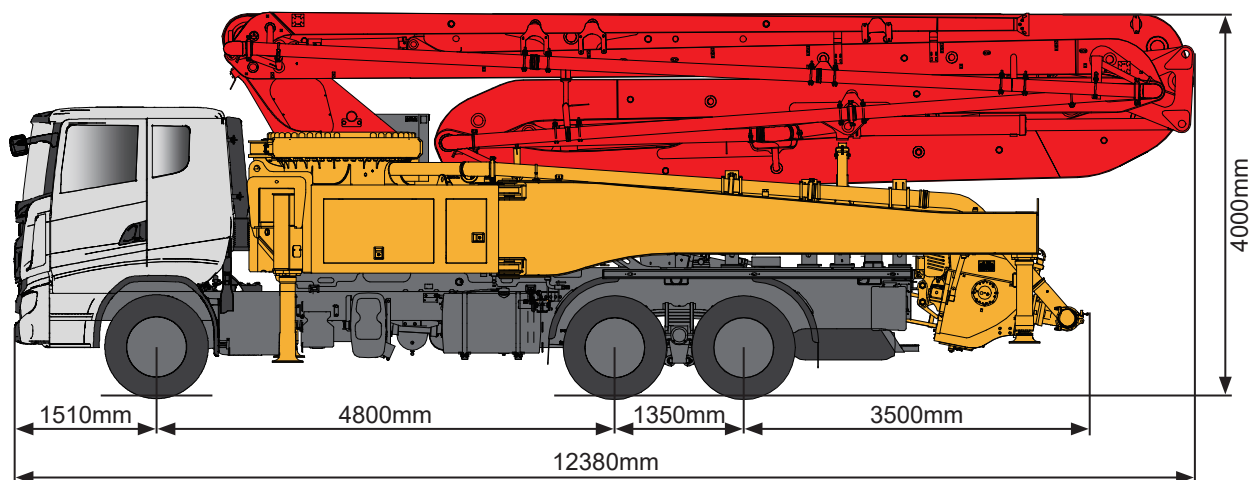


## Ultimate User Experience

- Comfortable cab comparable to passenger car experience
- Multi-language human-machine interface
- Easy-maintenance



## TECHNICAL SPECIFICATION



Note: standard dimensions version for SANY SYG5340THB 490C-10

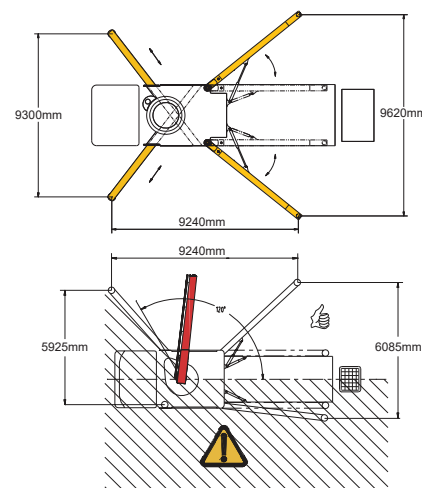
## TECHNICAL DATA

### Boom

Vertical reach	48.6 m
Horizontal reach	43.6 m
Depth reach	30.8 m
Unfolded reach	13.9 m
Rotation	± 360 °
Front outrigger spread L-R	9300 mm
Rear outrigger spread L-R	9620 mm
End hose length	3 m
End hose diameter	125 mm
Pipeline size	125 mm

### Pumping system

Output	200 m³/h (137 m³/h)
Pressure	12 MPa (8.3 MPa)
Delivery cylinder diameter	260 mm
Stroke length	1900 mm
Hydraulic system	Open
Hydraulic system oil pressure	32 MPa
Oil tank capacity	680 L
Water tank capacity	620 L
Drive pump	Rexroth/Danfoss
Volume of hopper	700 L



## DELIVERY & CONFIGURATIONS

### Chassis

Brand: SANY
Model: SYM5350THB1E
Engine type: D12C5-490E0
Engine max net power: 348/1900 kW/rpm
Emission standard: China V (Euro III adjustable)
Capacity of fuel tank: 600 L
Displacement: 12.12 L
Max.speed: 90 km/h

### Functions

Agitator rotation, 2 direction
Single-button double piston return
Single-button high/low pressure switch
Auto-lubrication fore core pump

### Safety

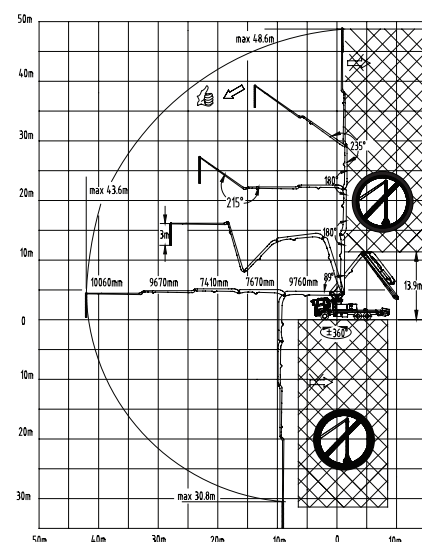
Mushroom button for horn, yellow
Emergency stop
Hopper plate

### Cleaning

Sponge balls
High-pressure water pump

### Others

Remote control System, wired (optional)
Industrial display control screen 7" (optional)
Operating manual
MachineLink+ APP/web connected
7 × 24 service with no worry



SANY Industrial Park, Economic and Technological Development Zone,  
Changsha, Hunan, China, 410100  
Sales Hotline  
Tel: 0086-731-85835199  
Mail: sales@sanyglobal.com

Service Hotline  
Tel: 0086-4006098318  
Mail: CRD@sany.com.cn

www.sanyglobal.com

The product configuration (including technical parameters) is subject to change and the delivered actual machine without notice.