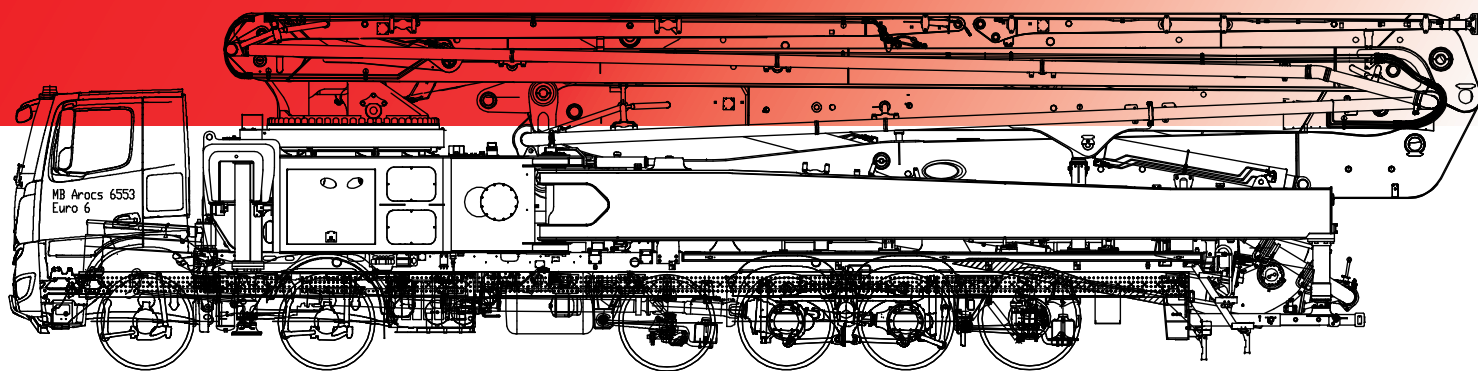


# TRUCK-MOUNTED CONCRETE PUMP SYG5590THB 67(SZ-EU)



## Energy-saving

- Pump efficiency is increased up to 25% while fuel consumption is decreased by up to 10%.



## Safety

- Our truck mounted concrete pump exemplifies Sany's precise, rigorous manufacturing philosophy and uncompromising focus on safety.



## Highly Wear Resistant Parts

- The highly wear resistant parts improve efficiency and reduce down time.



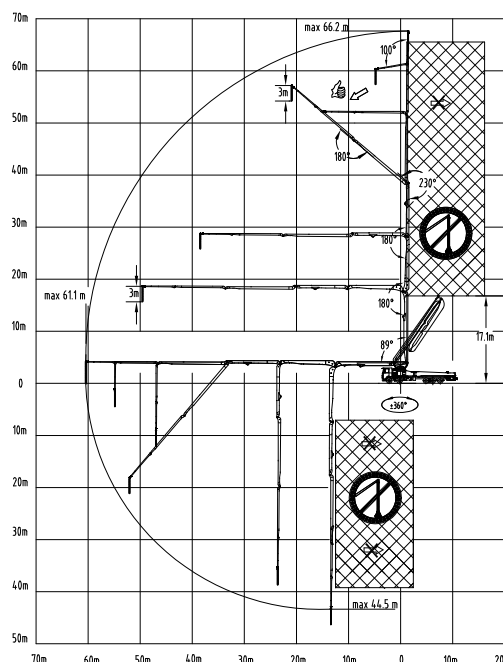
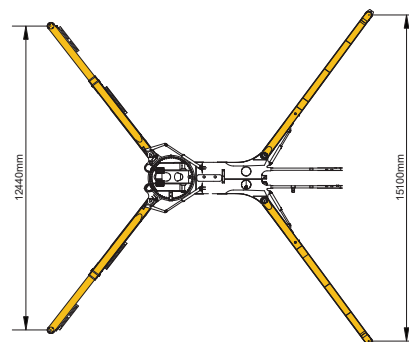
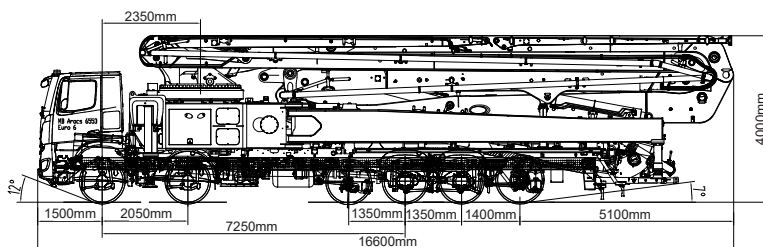
## Self-diagnosis Technology

- Continually monitors more than 200 aspects of the system during operation. Faults are displayed on the monitor. Review of the detected faults can reduce troubleshooting time by 70%.



# TECHNICAL SPECIFICATION

Model		Unit	SYG5590THB 67(SZ-EU)
X-unit Spe.	Length	mm	14470
	Width	mm	2550
	Height	mm	3640
	Dead weight	kg	43900
Boom & Outrigger Specification	Vertical reach	m	66.2
	Horizontal reach	m	61.1
	Reach depth	m	44.5
	Unfolded reach	m	16.8
	1st Section	Length	13735
		Articulation	89°
	2nd Section	Length	10615
		Articulation	180°
	3rd Section	Length	10225
		Articulation	180°
	4th Section	Length	13583
		Articulation	230°
	5th Section	Length	8210
		Articulation	180°
	6th Section	Length	5832
		Articulation	100°
Pumping System Specification	Rotation		± 360°
	Front outrigger spread L-R		12440
	Rear outrigger spread L-R		15100
	Output	Low-pressure	m³/h 172
		High-pressure	m³/h 8.3
	Pressure	Low-pressure	MPa 28
		High-pressure	MPa 260
	Max. strokes per minute	Low-pressure	times/min 1900
		High-pressure	times/min Open
	Delivery cylinder diameter		mm 32
	Stroke length		mm 880
	Hydraulic system		700
	Hydraulic system oil pressure		MPa 125
Chassis Specification	Oil tank capacity		L 3
	Water tank capacity		L 125
	Pipeline size		mm \
	End hose length		m \
	End hose diameter		mm \
	Chassis brand		\
	Chassis model		\
	Engine type		\
	Engine maximum net power		kW/rpm \
	Emission standard		\
	Capacity of fuel tank		L /
	Displacement		L /
	Max. speed		km/h /



www.sanyglobal.com

SANY Industrial Park, Economic and Technological Development Zone,  
Changsha, Hunan, China, 410100  
Sales Hotline  
Tel: 0086-731-85835199  
Mail: sales@sanyglobal.com

Service Hotline  
Tel: 0086-4006098318  
Mail: CRD@sany.com.cn

The product configuration (including technical parameters) is subject to change and the delivered actual machine without notice.