

# TRUCK-MOUNTED CONCRETE PUMP SYG5450THB 560C-10(SZ-EU)



## Energy-saving

- Pump efficiency is increased up to 25% while fuel consumption is decreased by up to 10%.



## Safety

- Our truck mounted concrete pump exemplifies Sany's precise, rigorous manufacturing philosophy and uncompromising focus on safety.



## Highly Wear Resistant Parts

- The highly wear resistant parts improve efficiency and reduce down time.



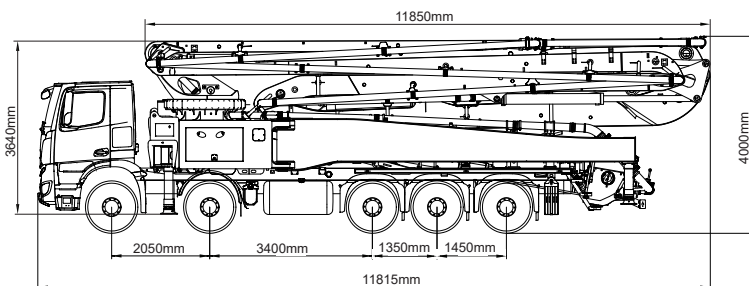
## Self-diagnosis Technology

- Continually monitors more than 200 aspects of the system during operation. Faults are displayed on the monitor. Review of the detected faults can reduce troubleshooting time by 70%.

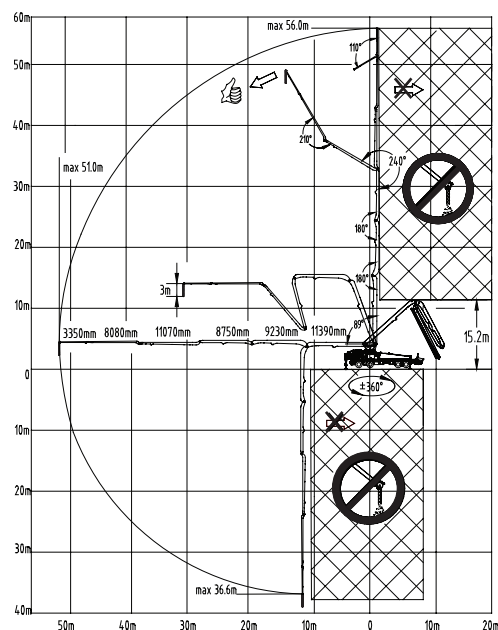
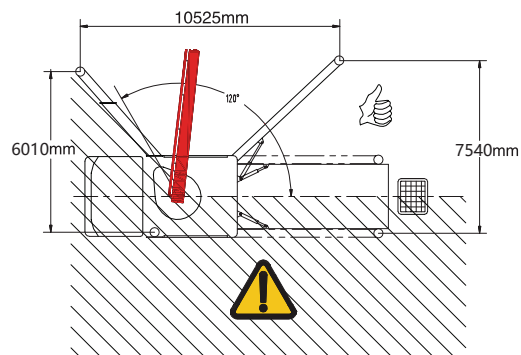
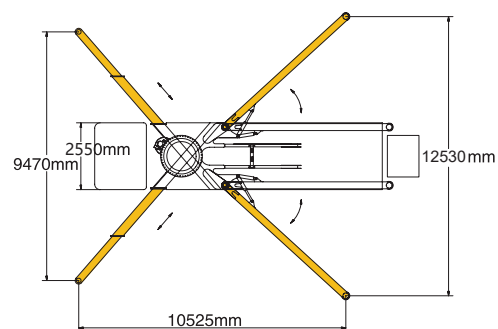


# TECHNICAL SPECIFICATION

Model		Unit	SYG5450THB 560C-10(SZ-EU)
X-unit Spe.	Length	mm	12050
	Width	mm	2550
	Height	mm	3750
	Dead weight	kg	32500
Boom & Outrigger Specification	Vertical reach	m	56
	Horizontal reach	m	51
	Reach depth	m	36.6
	Unfolded reach	m	15.2
	1st Section	Length	11390
		Articulation	89°
	2nd Section	Length	9230
		Articulation	180°
	3rd Section	Length	8750
		Articulation	180°
	4th Section	Length	11070
		Articulation	240°
	5th Section	Length	8080
		Articulation	210°
	6th Section	Length	3350
		Articulation	110°
Pumping System Specification	Rotation		±360°
	Front outrigger spread L-R		9470
	Rear outrigger spread L-R		12530
	Output	Low-pressure	m³/h 180
		High-pressure	/
	Pressure	Low-pressure	8.5
		High-pressure	MPa /
	Max. strokes per minute	Low-pressure	times/min 30
		High-pressure	times/min /
	Delivery cylinder diameter		mm 260
	Stroke length		mm 1900
	Hydraulic system		Open
	Hydraulic system oil pressure		MPa 32
Chassis Specification	Oil tank capacity		L 610
	Water tank capacity		L 600
	Pipeline size		mm 125
	End hose length		m 3
	End hose diameter		mm 125
	Chassis brand		/
	Chassis model		/
	Engine type		/
	Engine maximum net power		kW/rpm /
	Emission standard		/
	Capacity of fuel tank		L /
	Displacement		L /
	Max. speed		km/h /



The External Dimension Diagram Based on 5 axles Volvo Chassis



www.sanyglobal.com

SANY Industrial Park, Economic and Technological Development Zone,  
Changsha, Hunan, China, 410100  
Sales Hotline  
Tel: 0086-731-85835199  
Mail: sales@sanyglobal.com

Service Hotline  
Tel: 0086-4006098318  
Mail: CRD@sany.com.cn

The product configuration (including technical parameters) is subject to change and the delivered actual machine without notice.