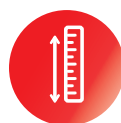


# TRUCK-MOUNTED CONCRETE PUMP SYG5441THBCB 560C-10



## Highly Reliable

- SANY has World-class lighthouse factories with top-level manufacturing capability, assuring reliable quality.
- Careful matching of components ensures stable performance of the whole machine.



## Strong Pumping

- Single-button high/low pressure switch
- Multiple upgrades assure high suction rate
- Significant advantage in pumping efficiency



## Extremely Economical

- The industry-leading longest service life of wear parts
- Advanced fuel combustion technology
- Targeted upgrades for different working conditions

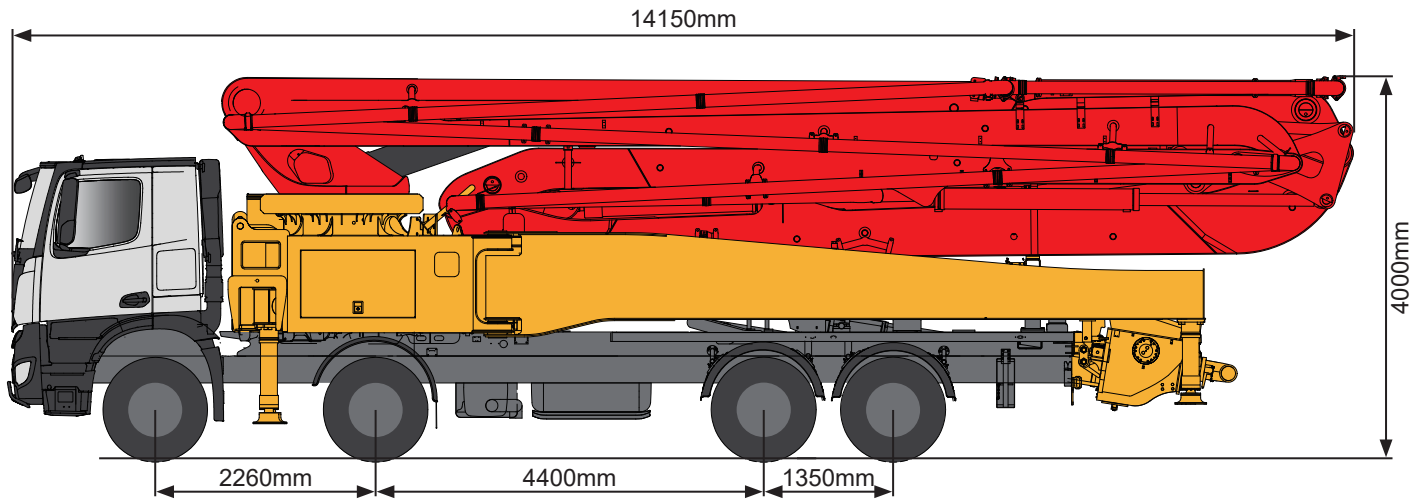


## Ultimate User Experience

- Comfortable cab comparable to passenger car experience
- Multi-language human-machine interface
- Easy-maintenance



## TECHNICAL SPECIFICATION



Note: standard dimensions version for SANY SYG5441THBCB 560C-10

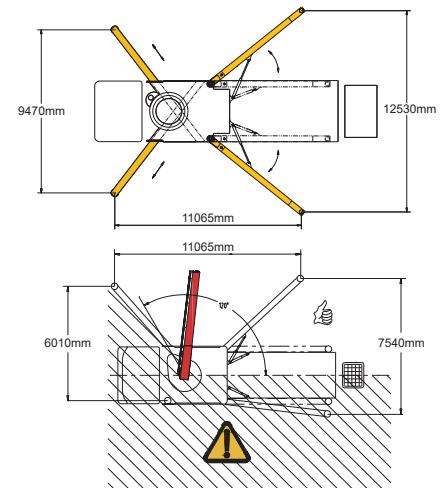
## TECHNICAL DATA

### Boom

Vertical reach	56 m
Horizontal reach	51 m
Depth reach	36.6 m
Unfolded reach	15.2 m
Rotation	± 360 °
Front outrigger spread L-R	9470 mm
Rear outrigger spread L-R	12530 mm
End hose length	3 m
End hose diameter	125 mm
Pipeline size	125 mm

### Pumping system

Output	200 m³/h (137 m³/h)
Pressure	12 MPa (8.3 MPa)
Delivery cylinder diameter	260 mm
Stroke length	2100 mm
Hydraulic system	Open
Hydraulic system oil pressure	32 MPa
Oil tank capacity	610 L
Water tank capacity	600 L
Drive pump	Rexroth/Danfoss
Volume of hopper	700 L



## DELIVERY & CONFIGURATIONS

### Chassis

Brand: BENZ
Model: Arocs 4140
Engine type: OM460LA. III /4
Engine max net power: 290/1600 kW/rpm
Emission standard: Euro III (Euro V adjustable)
Capacity of fuel tank: 390 L
Displacement: 12.8 L
Max.speed: 90 km/h

### Functions

Agitator rotation, 2 direction
Single-button double piston return
Single-button high/low pressure switch
Auto-lubrication for core pump

### Safety

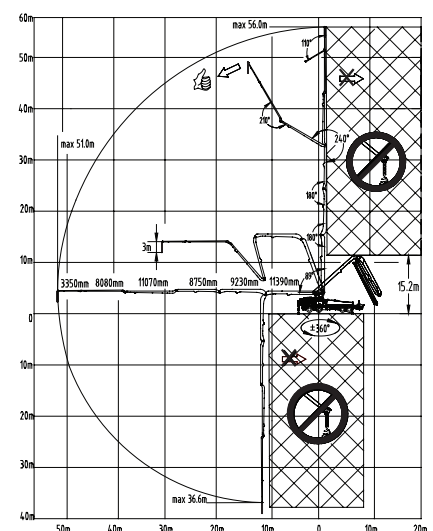
Mushroom button for horn, yellow
Emergency stop
Hopper plate

### Cleaning

Sponge balls
High pressure water pump

### Others

Remote control System, wired (optional)
Industrial display control screen 7" (optional)
Operating manual
MachineLink+ APP/web connected
7 × 24 service with no worry



www.sanyglobal.com

SANY Industrial Park, Economic and Technological Development Zone,  
Changsha, Hunan, China, 410100  
Sales Hotline  
Tel: 0086-731-85835199  
Mail: sales@sanyglobal.com

Service Hotline  
Tel: 0086-4006098318  
Mail: CRD@sany.com.cn

The product configuration (including technical parameters) is subject to change and the delivered actual machine without notice.