



Vertical Reach: 56m



SYG5445THBES 560C-10 TRUCK-MOUNTED CONCRETE PUMP

Energy-saving

Pump efficiency is increased up to 25% while fuel consumption is decreased by up to 10%.

Safety

Our C10 series truck mounted concrete pump exemplifies Sany's precise, rigorous manufacturing philosophy and uncompromising focus on safety.

Highly Wear Resistant Parts

The highly wear resistant parts improve efficiency and reduce down time.

Self-diagnosis Technology

Continually monitors more than 200 aspects of the system during operation. Faults are displayed on the monitor. Review of the detected faults can reduce troubleshooting time by 70%.

SANY HEAVY INDUSTRY CO., LTD.

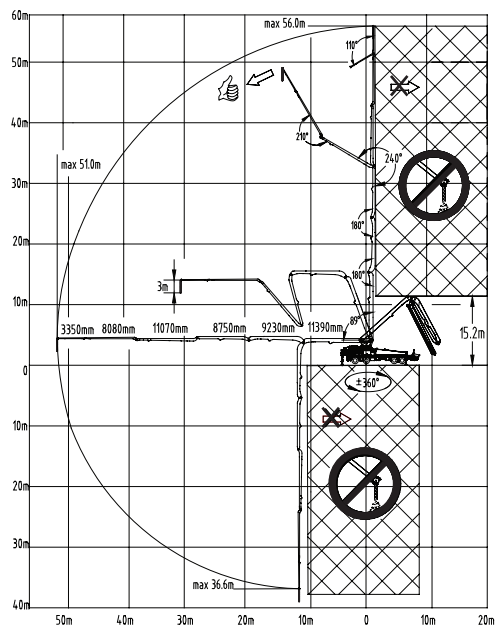
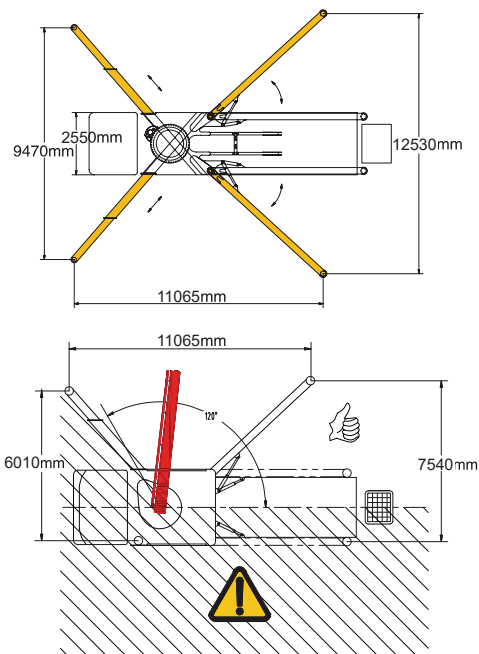
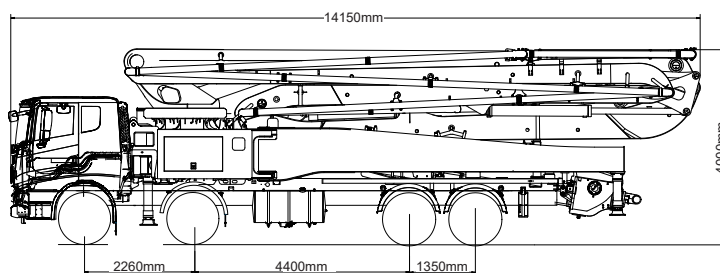
SANY Industry Town, Changsha Economic and Technological Development Zone,
Hunan Province, China

Service Line: +86 4006 098 318 E-mail: crd@sany.com.cn

SANY[®]
QUALITY CHANGES THE WORLD.

TECHNICAL SPECIFICATION

| Model | | | SYG5445THBES 560C-10 |
|----------------------------------|-------------------------------------|-----------------|----------------------|
| Overall Specification | Length(mm) | | 14150 |
| | Width(mm) | | 2550 |
| | Height(mm) | | 4000 |
| | Dead Weight(kg) | | 43500 |
| Boom & Outrigger Specification | Vertical Reach(m) | | 56 |
| | Horizontal Reach(m) | | 51 |
| | Reach Depth(m) | | 36.6 |
| | Min. Unfolded Reach(m) | | 15.2 |
| | 1st Section | Length(mm) | 11390 |
| | | Articulation(°) | 89 |
| | 2nd Section | Length(mm) | 9230 |
| | | Articulation(°) | 180 |
| | 3rd Section | Length(mm) | 8750 |
| | | Articulation(°) | 180° |
| | 4th Section | Length(mm) | 11070 |
| | | Articulation(°) | 240 |
| | 5th Section | Length(mm) | 8080 |
| | | Articulation(°) | 210 |
| | 6th Section | Length(mm) | 3350 |
| | | Articulation(°) | 110 |
| | Rotation(°) | | ±360 |
| | Front Outrigger Spread L-R(mm) | | 9470 |
| Rear Outrigger Spread L-R(mm) | | 12530 | |
| Pumping System Specification | Output (m³/h) | Low-Pressure | 200 |
| | | High-Pressure | 137 |
| | Pressure (MPa) | Low-Pressure | 8.3 |
| | | High-Pressure | 12 |
| | Max. strokes per minute (times/min) | Low-Pressure | 33 |
| | | High-Pressure | 22 |
| | Delivery Cylinder Diameter(mm) | | 260 |
| | Stroke Length(mm) | | 2100 |
| | Hydraulic System | | Open |
| | Hydraulic System Oil Pressure(MPa) | | 32 |
| | Oil Tank Capacity(L) | | 610 |
| | Water Tank Capacity(L) | | 600 |
| | Pipe Diameter(mm) | | 125 |
| | End Hose Length(m) | | 3 |
| | End Hose Diameter(mm) | | 125 |
| | Chassis Specification | Chassis Brand | |
| Chassis Model | | SYM5440THB1E | |
| Engine Type | | D12C5-490E0 | |
| Engine Maximum Net Power(kW/rpm) | | 348/1900 | |
| Emission Standard | | China V | |
| Fuel Tank Capacity(L) | | 600 | |
| Displacement(L) | | 12.12 | |
| Max. Speed(km/h) | | 90 | |



SANY HEAVY INDUSTRY CO., LTD.

SANY Industry Town, Changsha Economic and Technological Development Zone,
Hunan Province, China
Service Line: +86 4006 098 318 E-mail: crd@sany.com.cn

SANY[®]
QUALITY CHANGES THE WORLD.