



 **Vertical Reach:**
56.0m



SYG5441THBCB 560C-10 TRUCK-MOUNTED CONCRETE PUMP

Energy-saving

Pump efficiency is increased up to 25% while fuel consumption is decreased by up to 10%.

Safety

Our C10 series truck mounted concrete pump exemplifies Sany's precise, rigorous manufacturing philosophy and uncompromising focus on safety.

Highly Wear Resistant Parts

The highly wear resistant parts improve efficiency and reduce down time.

Self-diagnosis Technology

Continually monitors more than 200 aspects of the system during operation. Faults are displayed on the monitor. Review of the detected faults can reduce troubleshooting time by 70%.

SANY HEAVY INDUSTRY CO., LTD.

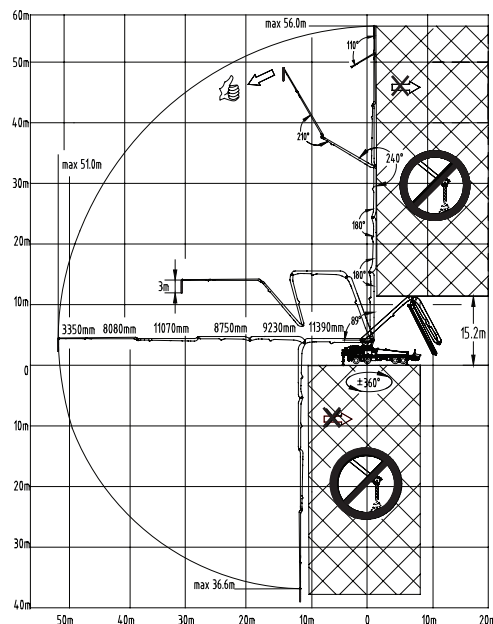
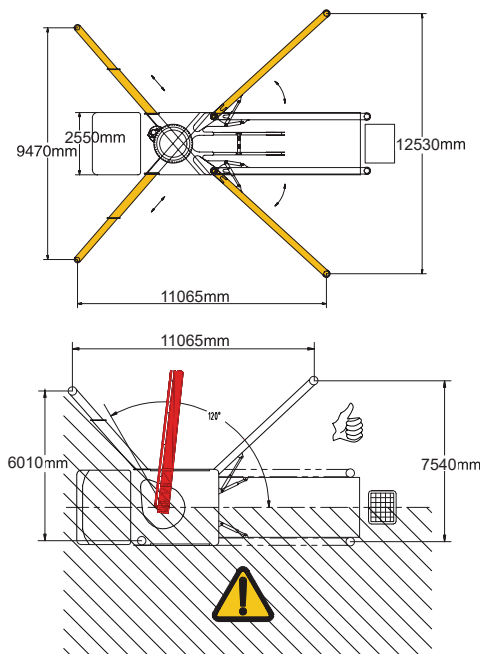
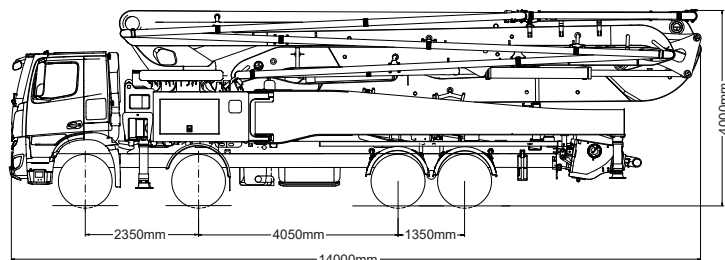
SANY Industry Town, Changsha Economic and Technological Development Zone,
Hunan Province, China

Service Line: +86 4006 098 318 E-mail: crd@sany.com.cn

SANY[®]
QUALITY CHANGES THE WORLD.

TECHNICAL SPECIFICATION

Model		SYG5441THCB 560C-10
Overall Specification	Length(mm)	14000
	Width(mm)	2550
	Height(mm)	4000
	Dead Weight(kg)	43600
Boom & Outrigger Specification	Vertical Reach(m)	56
	Horizontal Reach(m)	51
	Reach Depth(m)	36.6
	Min. Unfolded Reach(m)	15.2
	1st Section	Length(mm)
		Articulation(°)
	2nd Section	Length(mm)
		Articulation(°)
	3rd Section	Length(mm)
		Articulation(°)
	4th Section	Length(mm)
		Articulation(°)
	5th Section	Length(mm)
		Articulation(°)
	6th Section	Length(mm)
		Articulation(°)
Pumping System Specification	Rotation(°)	±360
	Front Outrigger Spread L-R(mm)	9470
	Rear Outrigger Spread L-R(mm)	12530
	Output (m³/h)	Low-Pressure
		High-Pressure
	Pressure (MPa)	Low-Pressure
		High-Pressure
	Max. strokes per minute (times/min)	Low-Pressure
		High-Pressure
Chassis Specification	Delivery Cylinder Diameter(mm)	260
	Stroke Length(mm)	2100
	Hydraulic System	Open
	Hydraulic System Oil Pressure(MPa)	32
	Oil Tank Capacity(L)	610
	Water Tank Capacity(L)	600
	Pipe Diameter(mm)	125
	End Hose Length(m)	3
	End Hose Diameter(mm)	125
	Chassis Brand	BENZ
	Chassis Model	Arocs 4140
	Engine Type	OM460LA. III /4
	Engine Maximum Net Power(kW/rpm)	290/1600
	Emission Standard	Euro III
	Fuel Tank Capacity(L)	390
	Displacement(L)	12.8
	Max. Speed(km/h)	90



SANY HEAVY INDUSTRY CO., LTD.

SANY Industry Town, Changsha Economic and Technological Development Zone,
Hunan Province, China

Service Line: +86 4006 098 318 E-mail: crd@sany.com.cn

SANY[®]
QUALITY CHANGES THE WORLD.