

SY135C

Strong Power Value Leader

Brand new change

Quality changes the world



Selling Points

• Engine

- Isuzu GJ-4JJ1 4-cylinder, 4-stroke water-cooled, direct injection, turbocharged & inter-cooled
- Euro 3

• Hydraulic system

- Swash-plate type duplex variable displacement piston pump, Kawasaki Brand (a group company of Japanese INLINE), Model: K7V63DTP1X9R; max. flow rate 2* 126 l/min

• Undercarriage

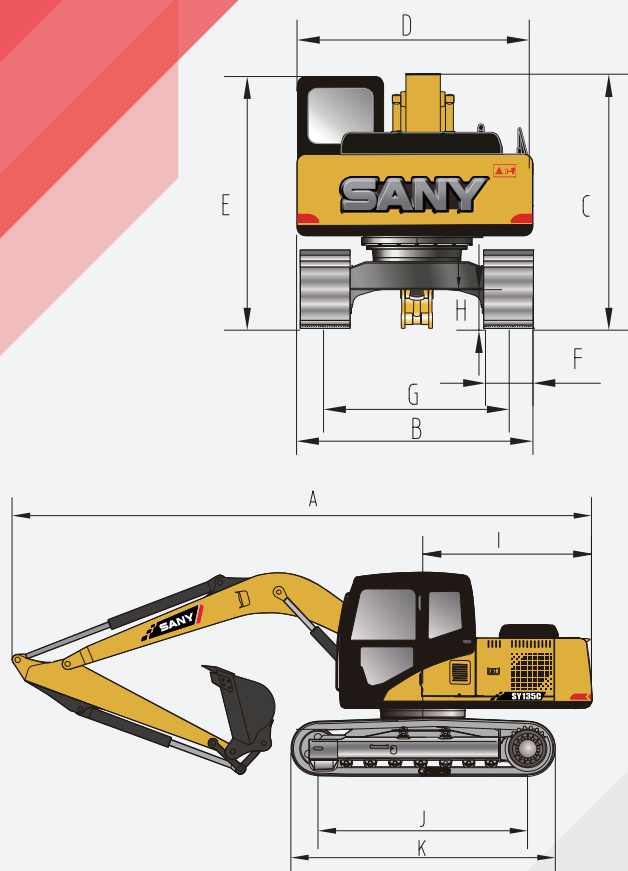
- Crawler carrier in box structure, 44 pieces of track pad on each side, 7 pieces of track roller each side, and 1 piece of track carrier roller each side
- The fixture of carrier wheel is reinforced on both sides so that the structure is more sturdy, durable and reliable

• Slewing System

- Full hydraulic drive
- Slewing motor, swash-plate type piston motor
- Double planetary gear reducer

Machine dimensions(mm)

Standard



SY135C

A Overall length(in transportation state)	7,700
B Overall width(in transportation state)	2,550
C Overall height(in transportation state)	2,815
D Upper width	2,490
E Overall height to cab top	2,740
F Width of Standard Track Shoe	500
G Track gauge	1,990
H Minimum ground clearance	425
I Slewing radius of tail	2,240
J Length of Track on Ground	2,930
K Crawler length	3,665
Width of undercarriage	2,490
Grouser height	25
Counterweight ground clearance	903
Standard Boom Length	4,600
Standard Arm Length	2,500

Working Performance

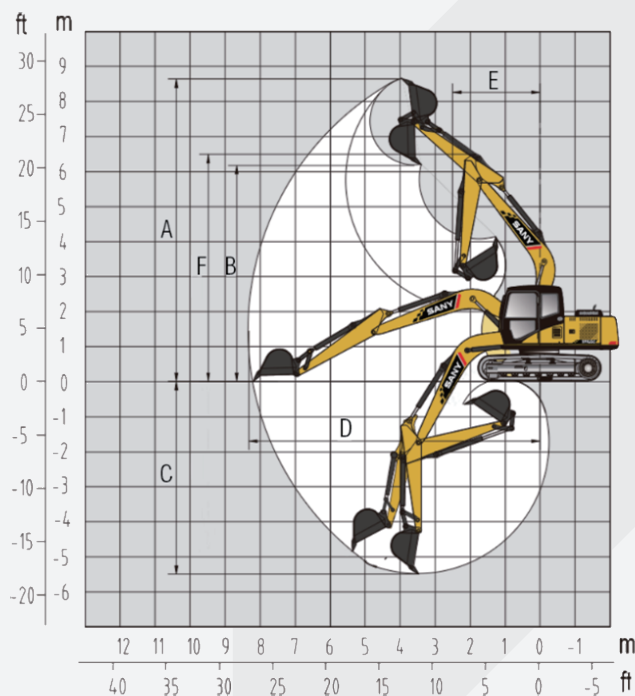
Standard

SY135C

Working weight	13,500kg
Bucket capacity	0.60 m ³
Engine power	73kw/2000rpm
Width of track pad	500mm
Digging Force of Bucket	92.7kN
Digging Force of Stick	66.1kN

Working Scope

Standard



SY135C

A Max. Digging Height	8,685 mm
B Max. Dumping Height	6,180 mm
C Max. Digging Depth	5,510 mm
D Max. Digging Distance	8,290 mm
E Min. Slewing Radius	2,500 mm
F Maximum height at minimum slewing radius	6,500 mm

SANY Heavy Machinery Co., Ltd.

SANY Industrial Park, Dongcheng Avenue, Kunshan Economic & Technological Development Zone, Jiangsu Province
Post code: 215300

After-sales service hotline: 4008-28-2318

Consulting & complaint hotline: 4008-87-9318

Website: <http://www.sanygroup.com>



Note

The documents and technical specification will be changed without further notice due to continuous technical improvement.
The machine in the picture might include additional equipment.

ZJSYX0604CH (August, 2022)

Printed in CHINA