

SY335C

**Classic Succession
Value leader**

QUALITY CHANGES THE WORLD

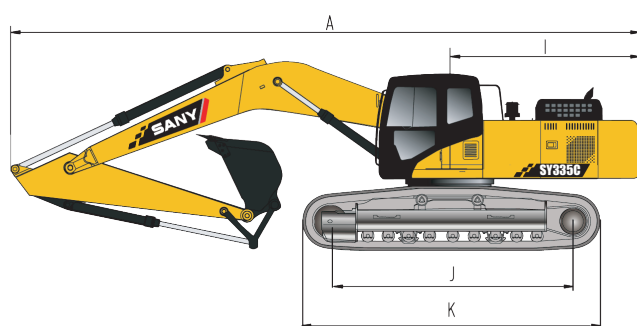
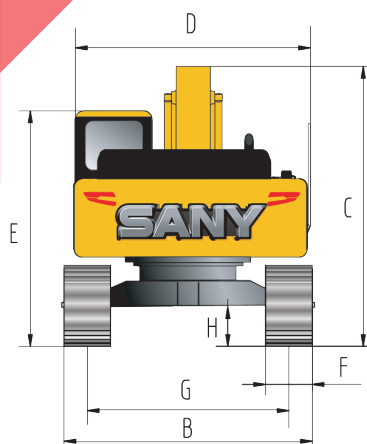


Selling Points

- Isuzu motor is in line with EU Stage II Emission Standard and international standard. It is more powerful with lower fuel consumption;
- Efficient, low noise, high-flow main pump is used to improve the operating efficiency of the machine as a whole;
- Longer strengthened track frame reduces ground-contact specific pressure while improving its moving performance;
- Large torque rotary mechanism promotes rotary starting moment and reduces rotary drift;
- In case of demanding operating condition, the working assembly is enhanced according to quarry operation so as to increase its reliability;
- More perfect working capability in mining areas, less cost of operation and higher investment return;
- Fault diagnosis system extends the period for overhaul and reduces the cost for maintenance and repair.

Performance parameters

Standard



Operating weight	34300kg
Bucket capacity	1.5(HD)/1.65(HD)/1.8m ³
Rated power	190.5kW/2000rpm
Travel speed(High/Low)	5.2/3.4km/h
Swing speed	10.5rpm
Gradeability	70%/35°
Pressure to the ground	62kPa
Bucket digging ability	220kN
Excavating force	170kN

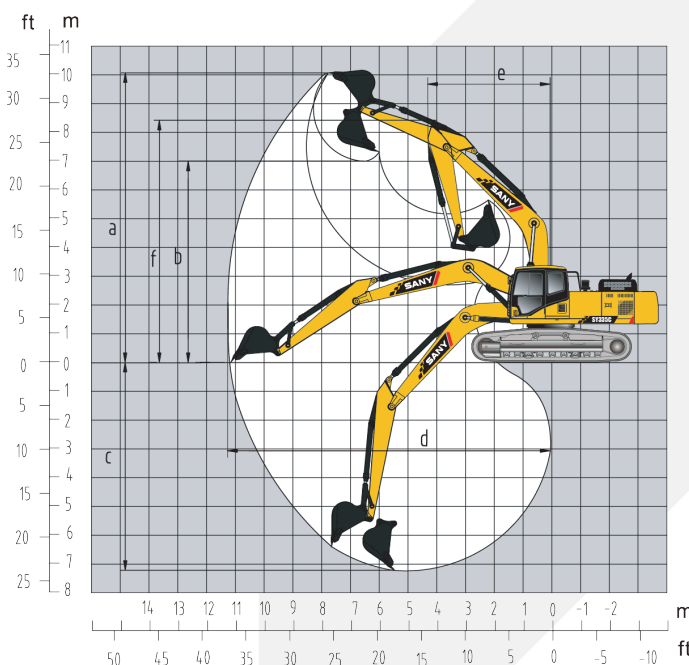
Overall dimensions (mm)

Standard

A Transport Length	11100
B Transport width	3190
C Transport height	3600
D Upper body width	3145
E Overall height	3085
F Width of Std. track shoe	600
G Track gauge	2590
H Ground clearance	550
I Tail swing radius	3300
J Track length on ground	4140
K Track overall length	5080

Operation range: mm

Standard



a Max. digging height	10100
b Max. dumping height	7025
c Max. digging depth	7410
d Max. vertical wall digging depth	6170
e Max. digging reach	11050
f Min. swing radius	4450
g Max. height at min. swing radius	8500

SANY Heavy Machinery Co., Ltd.

Sany Industry Town, Economical and Technological
Development Zone, Kunshan, Jiangsu, China
Consultation/Complaints Hotline: 4008-28-2333
After-sales Service Hotline: 4008-28-2318
Zip Code: 215300
Tel: 0086-0512-5783 1902
Fax: 0086-0512-5783 1999-11102
Web: <http://www.sany.com.cn>



Note

Materials and specifications are subject to change without further notice in accordance with our continuous technical innovations. Photos and illustrations may or may not include additional equipments.

ZJSYX0224CH (February, 2022)

Printed in CHINA